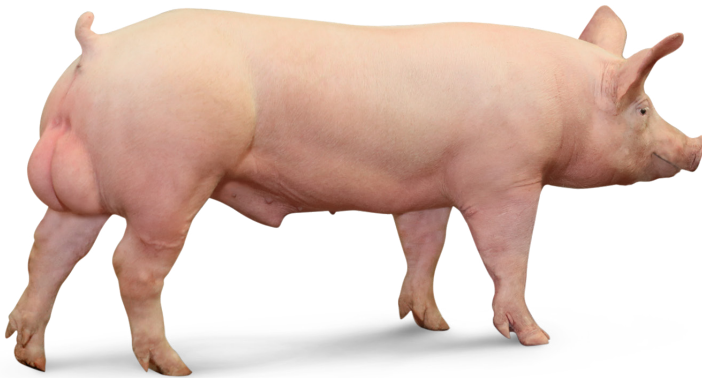


PIC[®]337: Heavyweight champ

**Never Stop Improving
Your Profitability.**

Accelerating Genetic Improvement

Expansion in elite sow populations allows for increased selection intensity for traits impacting profitability and farms will realize these gains quicker.

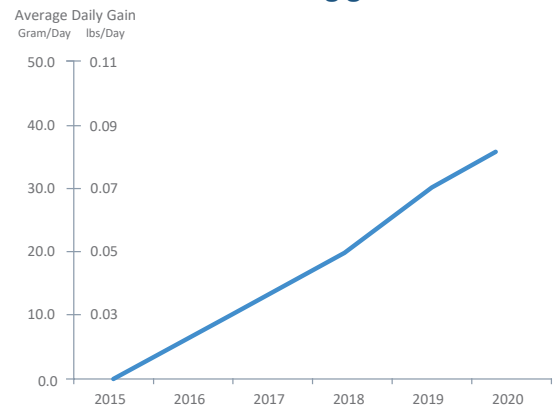


The PIC[®]337 is known for maximizing profitability throughout the pork chain. The PIC[®]337 delivers exceptional performance both on the farm and at the plant, through:

- Superior feed conversion
- Excellent heavy weight performance
- Lean gain efficiency
- Valuable carcasses
- Excellent meat quality

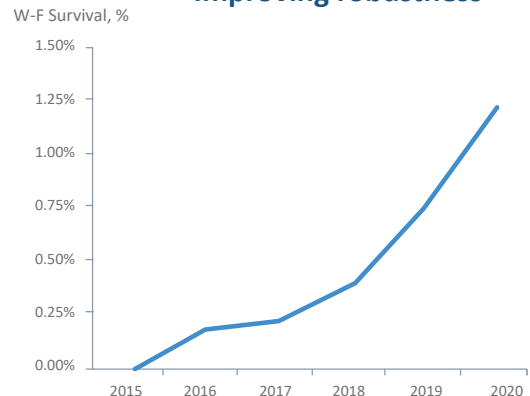
The PIC[®]337's world class feed conversion coupled with outstanding performance at heavier weights increases profit for producers. In addition, exciting recent advances in genetic improvement are already visible in PIC elite farms.

Accelerating growth



Improvement in PIC Elite Farm trends from 2015-2020.

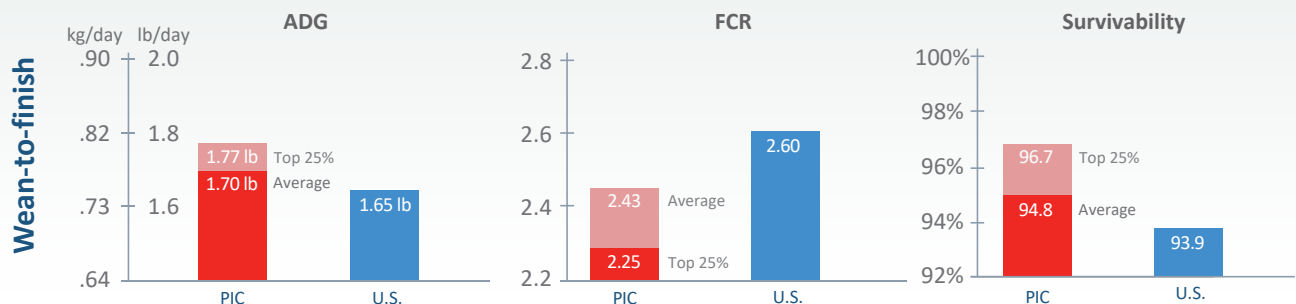
Improving robustness



Improvement in PIC Elite Farm trends from 2015-2020.

PIC[®]337 outperforms U.S. benchmarks in ADG, FCR and survivability

PIC[®]337 wean-to-finish close outs



Wean-to-finish performance from 5 to 127 kg or 12 to 280 lbs.
Source: PIC[®]337 performance 2017-2019, U.S. National Pork Board Industry Productivity Analysis, Adjusted Wean-to-Finish Results for 2017-2019. Survivability rate calculated as the inverse of the mortality rate.

©PIC 2021 All Rights Reserved. PIC[®] is a registered trademark.

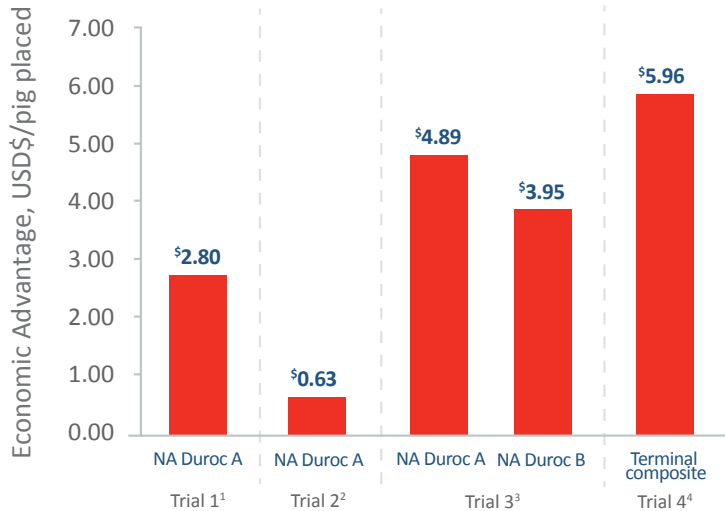
PIC.com

PIC[®]337: Heavyweight champ

Never Stop Improving
Customer Success.

PIC[®]337 outperforms the competition on profitability with FCR as a key differentiator

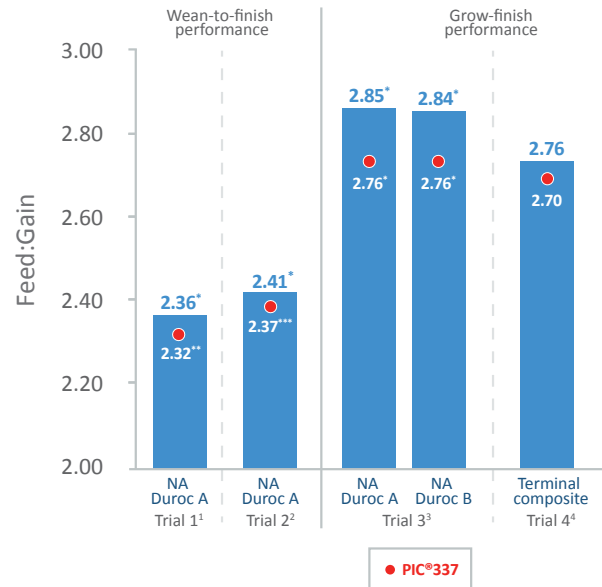
PIC[®]337 Economic Advantage (USD\$)**



Source: ¹ES122. This trial was conducted with PRRS positive pigs; ²ES126; ³ES150; ⁴ES144
*P≤0.05
**Economic advantages were calculated assuming a fixed-time marketing strategy.
Values measured net margins above feed and housing costs on a per pig placed basis.

PIC[®]337 Feed Conversion Ratio

PIC[®]337-sired pigs consistently outperformed competitor offspring in feed conversion.



PIC[®]337 brings strength beyond production

PIC[®]337 brings more carcass value

		PIC [®] 337	Competitor
Carcass Value	Carcass Yield	74%	73%
	Backfat (mm/inch)	17.0/0.67	18.4/0.72
	Loin Depth (mm/inch)	68.8/2.71	63.2/2.49
	Carcass Lean	57%	55%

PIC[®]337 has excellent meat quality

		PIC [®] 337	Competitor
Meat Quality	Color	4.2	4.1
	pH	5.7	5.7
	Marbling	3.4	2.9

Source: ES100, ES117, ES122, ES133

About PIC

PIC (Pig Improvement Company) is the global leader in swine genetics with a commitment to Never Stop Improving. We strive to do what's right for the pig, the producer and the industry - and to deliver the best products and technical services to our customers. Our goal is to make our customers the most successful pork producers in the world.

PIC[®]